



OUR VILLAGE – STUDLEY

Studley used to be the home of the needle,
Making them by the tonne.
Heading, eyeing, grinding
Lots of contracts they won.
They were known worldwide,
Their quality was so good.
Lots of friends worked there,
Harder! In metal, than wood.
Studley was also the Fisherman's friend,
Making tackle and hooks.
You knew the name of Shakespeare
You only had to look.
Due to recession, and items from abroad
The needles and tackle have diminished.
Only a few places left
Down, but definitely not finished.
Studley is a large village,
With lots of eating places.
Greek, Italian, Indian, Nepal
Chippy, Pubs and more.
So look on the map,
Come and See!!
A friendly village for you and me.

Poem by Cynthia Warren.



**Age Concern Warwickshire Charity Shop Studley
6, High Street**

01527 857726

Charity shops provide Age Concern Warwickshire with an invaluable source of income. This income helps us to provide much needed services that assist older people across the county.

New and existing customers are always most welcome at our shop in Studley, as are donations. Much of the merchandise on sale is of surprisingly good quality so why not come and see for yourself.

Given the present economic crisis, there has never been a greater need for us to raise vital funds to support our services. To achieve this we must generate income from the resources that we have at our disposal.

We urgently need good quality donations, e.g. clothes, shoes, handbags and bric-a-brac. It may be that you have end of season lines that you no longer have a need for? We would welcome these donations and ask you to kindly take them to our Age Concern shop at the above address. Alternatively, we can arrange to collect your donations. Please telephone our Head Office or the Studley shop at the number above.

Age Concern Warwickshire provide a wide range of practical, care and information services – some of which are free to people in need. Please ask a member of our shop staff or phone our Head Office number for further details.

Many thanks for your help

Corrie Rees

Shops Controller, Age Concern Warwickshire 01926 458100



VOLUNTEER TRANSPORT SCHEME

Looking for Transport to Hospitals, Doctors, Dentists or other clinics?

Volunteer Services transport people with a genuine need for help.

Vasa ask for a contribution of 40p per mile towards volunteer driver's costs.
Minimum charge £3. Three days notice of the proposed journey is required.

**Call Stratford on 01789 296344 Monday – Friday or
Alcester 01789 763117 Monday – Friday 10.00am – 12.30pm**

.....

Warwickshire County Council Wood Chipping Service



- Subsidised service available to Warwickshire householders Monday to Fridays by appointment
- Chippings will be left with the householder in plastic bags supplied as part of the service.
- Chippings are left for use by the householder and will **NOT** BE TAKEN OFF SITE.
- Garden woody waste must be no greater than 13 cm (5”) in diameter and of manageable length
- Material that is unsuitable to chip will be left for the householder to deal with.
(e.g. Processed or treated wood. E.g. Pallets or Fence posts).
- The resident **MUST** be at home while the work is being done for Health and Safety.
- Garden waste for chipping must be in an area with vehicular access.
- The cost of each visit (Max 1 hour) is £20.00 inc. VAT
- To book an appointment ring : **01926 738827 Monday - Friday 09.00 – 12.15**
(Answerphone outside these hours)

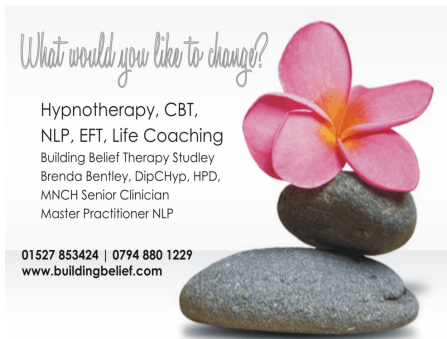
Studley Art Circle



Reminder of Annual Exhibition Date for your Diary!

The Art Circle will be holding their Annual Exhibition this year on Saturday 15th
October
2011 from 10.30am – 3.30pm.

Paintings are by local artists in various mediums including oils, watercolours, pastels,
inks and acrylics most of which are for sale.
Admission 50p and part proceeds will go to a local charity.



If you'd like help with breaking unwanted habits or gaining the confidence you need to stay on track towards your goals, then please contact: Brenda Bentley DipCHyp HPD MNCH Reg. Senior Clinician MNLP | 01527 853 424 or 0794 880 1229

How about taking a slightly different approach? By simply taking each month as it comes and applying positive changes, you're not trying to conquer the world in one fowl swoop, but taking small baby steps towards long-standing change that will last for years to come.

Dog Fouling in Studley

The Parish Council continues to receive complaints about dog fouling in the village. Stratford District Council together with the Parish Council take dog fouling very seriously and would like to advise that if you are caught allowing your dog to foul in any space which is open to the public, including bridleways and footpaths within the District you will be issued with a Fixed Penalty Notice.

To all responsible dog owners who do pick up and keep their dogs under control, thank you for keeping the village a cleaner and happier place to live. Dog foul, when bagged can be placed in a dog bin or any litter bin.

Highway Verge Cutting

Reductions in central government funding for local authorities means that both WCC and SDC has had to review their budgets. As a result Stratford District Council has notified the Parish Council that the grass cutting of various grass verges in Studley will be reduced from nine cuts which was carried out last year to only six for 2011/2012 season.

This will make a huge difference to the look of the verges in the village. Hopefully when the contracts are up for renewal in 2013 the Parish Council may take over the maintenance, if we are able to obtain additional funding.

We will continue with the grass cutting we undertake at the moment on the recreation grounds and some open space areas such as the green opposite The Railway pub on a regular basis.



Friday 29th July 2011
Judgement Day
What you can do to help:-

- ☒ Front gardens and shop fronts: weed and litter free
- ☒ Hedges and lawns: cut and edged
- ☒ Recycling bins put away preferably out of sight
- ☒ Paths, driveways and gullies: swept and weeded
- ☒ Flower displays: dead-headed, weeded and watered

Now, can you...

- ☐ Help a neighbour?
- ☐ Join a litter pick?
- ☐ Sweep a common area?

Litter-picking
 Why not join Action Studley's Litter-pick on Saturday 16th July, 10 to 11am, and again daily throughout the week. Assemble at Youth Centre car park. Gloves advisable.

Printing by  Sponsors of Studley in Bloom

www.studleyinbloom.org.uk

Magnetic Earth Events...

Presents **A 'Vibrant Living' Show**

on Saturday 9th July
10.00am - 4.30pm

Studley Village Hall, Studley, B80 7HJ

Browse over 20 fabulous stalls including: Hand made jewellery, Art, Candles, Crystals, Rock Crystal lamps .. and more!

Experience a 'Taster Therapy' Session with a qualified therapist for as little a £5;

Reiki, Aromatherapy, Breathwork, Reflexology .. and more!

Come and attend the wonderful & inspiring 'free' talks all day!

£2 entrance. Children welcome (Face painting available!)

Refreshments to purchase. Free parking!

Door donation to Water Aid.

email: Jacky at: magneticearthevents@gmail.com or Tel: 07944 131 542 for more details!

Come and be part of a day to ignite the mind and nourish the soul!



Closure of Studley Police Office

With effect from the beginning of May the Police Office in Studley Village Hall on the High Street is now closed.

If you wish to contact the police in the future the Alcester North Safer Neighbourhood team which consists of PS Bob Shaw, Team Sergeant, Voicemail 10542, Beat Manager PC Simon Bennett - Voicemail 11536 Mobile 07920 531450, PCSO Gary Jonson - Voicemail 16111, Mobile 07789 653018 and PCSO Laura Thomason - Voicemail 16221, Mobile 07789 653018.

Alcester Police Station, Priory Road, Alcester, Warwickshire B49 5DZ

Tel: 01789 444816

Fax: 01789 444830

Email: alcesternorth.snt@warwickshire.pnn.police.uk



Studley Youth Theatre

Lead by professional actors, directors and musicians with regular guest workshop leaders, SYT will offer energetic and engaging workshops for children and young people of all ages.

Whilst the Youth Theatre is based at Studley High School, everyone is welcome!

Workshops will run as follows:

Wed 4-5pm 5-7years
Wed 5-6.30pm 11-14years

Thurs 4-5pm 8-11years
Thurs 5-6.30pm 14years+
Thurs 5-6.30pm 13years+ StudGLEE Club



SYT are also offering 4 young people a unique opportunity to join their stage management team. For the same fee as other members, stage managers will be invited to the Thursday 5pm session but can also choose to attend any other session. They will document each session through photographs and notes and be responsible for researching props and costumes, helping with press and publicity and then working back-stage on all end of term productions.

The StudGlee club gives members the opportunity to create their own 'Glee' tribute group; choosing songs, helping to create a capella arrangements and then performing as part of our end of term productions.

There will be **no** auditions to join the Youth Theatre, members of all ages and ability are welcome.

Workshops for younger members will focus on story-telling and building confidence through games, songs and performance techniques.



Workshops for our older members will focus on improvisation (using different scripts as inspiration) and building performances skills through games, songs, group and solo work.

All members of the Youth Theatre will have the opportunity to perform in each end of term production.



Citizens Advice Bureau in Studley



The organisation that provides a lifeline for so many people with problems of all kinds, The Citizens Advice Bureau, is opening an outreach service at Studley Village Hall. The CAB is providing its usual confidential, impartial and non judgmental advice by appointment between 10.00 and 13.00 every Tuesday. **Those wishing to make an appointment to see the CAB adviser should ring 01789 200136.**

"We provide free help and support to anybody on a huge range of topics, from debt and divorce to employment and benefits" says Stratford upon Avon Bureau Manager Sue Green. "We are grateful to Warwickshire County Council for providing the funds to make it all possible and to our local MP Nadhim Zahawi for alerting us to the need for this service in the first place. For those that are unable to get to our main office in Stratford upon Avon it will be a vital local resource."

The Studley facility is now one of five outreach services managed by the Stratford upon Avon CAB in Meer Street, the others being Wellesbourne, Alcester, Southam and Shipston upon Stour.

.....

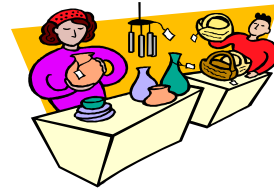
Car parking in Studley



Whilst the majority of motorists in the village are conscious of where and how they park their vehicles there are some who have no thought for look of the village, or the dangers they create by inconsiderate parking.

People are still parking on yellow lines outside Tesco Express forcing vehicles coming from the Barley Mow island to cross onto the opposite side of the road and at the same time endangering the School Crossing Patrol and the Children she is helping across a very busy road. There have been occasions when she has received abuse from drivers when she has asked them not to park there.

Studley is not the most attractive village in Warwickshire but it not helped by motorists driving across and parking on grass verges creating furrows in the grass, causing blind spots on corners and in New Road endangering Children coming out of school by restricting their vision of the road and that of other drivers.



STUDLEY FESTIVAL AND FUN DAY 2011

This year the Festival will be held on Saturday 9th July on the Studley Sports and Social Club Sports field in Eldorado Close beginning at 12 noon and continuing through to the evening.

There will many more stalls, stands and exhibitions than before plus the Pig Roast, Bouncy Castle and Fun Fair.

The Club Bar will be open all day and if you have never been in the club feel free to look around at the facilities. The club is not restricted to "members" this is village facility open to everyone and anyone.

Talk to the Committee Members on the Club Stall.

