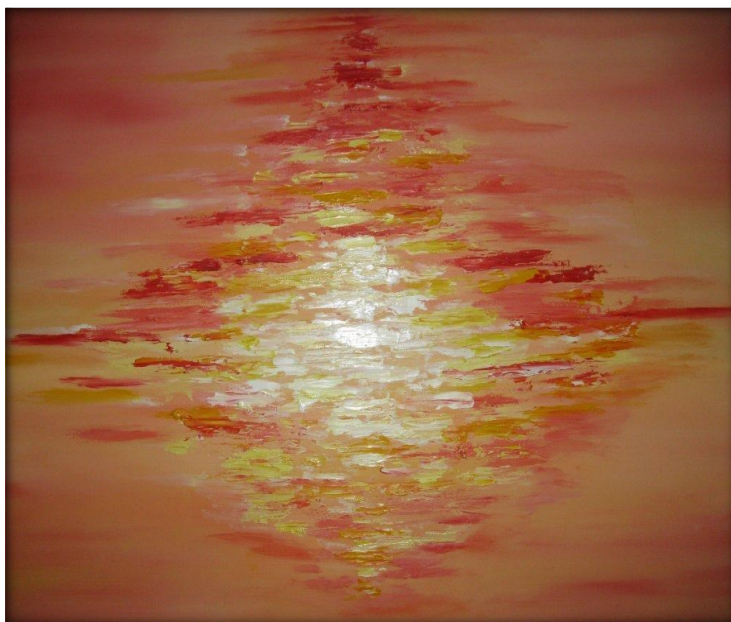




STUDLEY VOICE



Sunset : Arillas
Painted by: Maureen Rickhards

Spring & Summer 2013

Studley 2012

Another year has come to end but 2012 have been an exciting year with many events that were celebrated by the residents of Studley. Here is a look back on all the events in spite of the many challenges that we all face, the folks of Studley still manage to pull together as a community.

Queen's Diamond Jubilee Celebration



The Queen's Diamond Jubilee celebration in Studley was a huge success with residents turning out in force for the afternoon's 'Picnic in the Park' and then in the evening at Studley Sports & Social Club with music and dancing, culminating in the lighting of the Jubilee Beacon and a spectacular firework display.



Studley Community Library Opens

The launch of Studley Library took place on Tuesday 3rd April 2012, the culmination of many months of hard work.

The library will continue to be supported by Warwickshire County Council with the loan stock of books. It will be manned by 12 trained volunteers with the help of many others.

Studley Fire Station Closes

Studley Fire Station closed its doors for the final time on Monday 8th October 2012. Studley residents gathered in Bell Lane to say farewell to the Fire Fighters. Fire Fighters still serving and those who have served in the past were in attendance. Councillor Paul Beaman on behalf of Studley Residents thanked the Fire Fighters for their outstanding contribution to Studley during the past 50+ years and said they would be very much missed. He wished them all the very best for their futures.



Studley Parish Council Annual Awards Evening

The first combined Annual Awards Evening took place at Studley Village Hall on Saturday 27th October 2012. The event attended by over 100 local people celebrated the achievements of Studley Residents and their personal contributions to the community. Awards were also presented for a variety of horticultural achievements.

Studley Parish Council Chairman, Councillor Paul Beaman welcomed the guests and explained that Councillors had decided to combine the Annual Parish Council Chairman's Evening with the presentation of the various Parish Council Awards to give proper recognition for the achievements of the winners and the work that residents do to make Studley a better place. During the evening an auction of a painting by Mrs Maureen Rickhards a local artist and a bespoke children's chair together with a raffle and donation raised £483.00 towards the Fund for purchasing a Defibrillator for Studley

Remembrance Parade



A sizeable crowd spanning the generations gathered around the war memorial on the Alcester Road in Studley to take part in the annual Remembrance Day commemorations and pay silent tribute to those who lost their lives in war.

The act of commemoration then took place and two minutes silence observed before poppy wreaths were laid by members of the British Legion, Studley ATC, St. John's Ambulance, Guides, Brownies and Rainbows, Scouts, Cubs and Beavers, Police, First Response and Studley Parish Council. Jason Beaman from Studley and currently serving as a Senior Aircraftman (Tech) laid a wreath on behalf of the RAF.

Afterwards a service enjoyed by all took place in Studley Village Hall led by Rev David Silvester, Vicar of St Mary's Church of England and Deacon Stephen Dalton of St Mary's Roman Catholic Church.

Studley Parish Council Christmas Fayre



Studley Parish Council held their annual Christmas Fayre on Friday 7th December. Many children visited Santa in the fabulous grotto which was prepared by his chief elf, Diane Clarke. Refreshments including mulled wine and mince pies were provided by the ladies of 'coffee break'. 31 stalls sold a variety of items including, jewellery, stained glass, bird tables, cakes & vintage cake stands, honey, cards, calendars and xmas wreaths. Various tombolas offered a variety of prizes and fun was had by many playing 'Beer Pong'.

The event was opened by Cllr Mrs Sue Redman and Mr Kevin Ward a Town Crier brought a sense of occasion to the event. St Mary's RC junior school choir sang a selection of carols.

The raffle was well supported with a first prize of £50, two £25 prizes and a fabulous hamper. £250 was raised by the raffle which will go towards the purchase of a Defibrillator for the Studley Community

STUDLEY CINEMA

Films from April to June 2013



Showing
20th April
Running Time
107 Mins



Showing
18th May
Running Times
123 Mins



Showing
15th June
Running Times
82 Mins

Join the Studley Cinema Film Club.

Annual membership fee £5.00 which allows 4 family members to attend Film Showings at only £4.00 per show. (Must be 16 or over to be members) Film certification will apply.

Tickets can be purchased at the Village Hall from 2 pm – 5 pm Monday to Friday in advance to avoid disappointment. Showing time 7pm for 7:30pm

Tel No : 01527 853 204 Email : studleyvhall@btconnect.com

Studley Film Club reserves the right to change the schedule of programme, times, pricing and to refuse admission.



HILLS WILLS

HOME VISIT WILL WRITING SERVICE

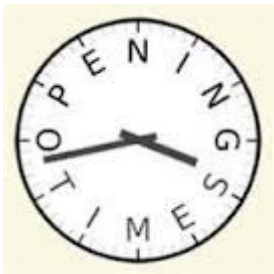
Protect your love ones
Specify your beneficiaries
Appoint guardians for your children
Protect your property from care home fees
Lasting power of attorney
Prepaid funeral plans
from **£95.00** (no vat)

All meetings conducted in the privacy and comfort of your own home
For free advice, an information pack or to make an appointment call Michael Hill (MIPW)
01527 850775

Email: info@hillswills.co.uk



Hills Wills complies with the IPW Code of Practice



Revised Opening Times Parish Council Office

As from 26th November 2012 will be open from
Monday, Tues, Thurs & Friday: 9 am – 1pm
Closed all day Wednesdays.

When the office is closed you may leave a
message on the telephone on 01527 853204 or
email: clerk@studleyparishcouncil.org.uk



Studley Parish Council Tackles Fouling in Studley

Following feedback from residents the Parish
Warden regularly patrols around Studley
identifying areas where dog fouling is an issue.

Any person caught not clearing up after their dog
will be reported to the Parish Council and may be
prosecuted. Please contact: 07833458004

STUDLEY VILLAGE HALL PRESENTS BLACK COUNTRY COMEDY DUO DANDY



Top husband and wife comedy and vocal act **Dandy** has delighted audiences in the Midlands for many years. Their unique brand of contemporary Black Country humour has made them a very popular act.

Their great strength lies in their original approach to comedy. Using jokes, stories, observations and personal experience, they create a warm, happy atmosphere, adapting the act to suit the audience.

Please join us to celebrate the
10th Anniversary of Studley Village.

Ticket £9.00 include fish & chips supper

22nd June 7:30pm

Open Bar

Studley Village Hall

For tickets contact:

Studley Parish Council: 01527 853 204

Book early to avoid disappointment

Act on energy together

Residents know that warmth, hot food and hot water are basic to living and good health. They also know they have to pay for it and costs are predicted to increase again over the next twelve months. Knowing this, may have prompted many residents to go to the Village Hall on Friday 8th February to hear about the "Energy Switching Scheme"

The representative from "Act on Energy" explained the benefits of the scheme. The residents at the meeting felt the way forward was to encourage as many of our neighbours as possible to think about becoming part of a local energy supplier energy switching group.

The purpose of the group would be to;

- Help households get the cheapest energy tariffs
- To negotiate bulk discounts to reduce energy bills

To encourage this collective bargaining Studley Parish Council agreed a form could be collected from the village hall. The form explains why Stratford District Council is involved and what you need to do.

Please read the form and think about giving your support to the scheme. Cheaper gas, electricity and oil will help us all. A bit of help is worth more than turning the heating down in cold weather.

Hazel Wright
Ward Member Studley



Yoga classes

STUDLEY VILLAGE HALL

Wednesdays: 6:30pm – 7:30pm

STUDLEY PARISH CENTRE

Fridays 7 pm - 8pm

£5.50 per session

- Friendly and fun
- Full and clear instruction given
- All levels of ability welcome, flexibility optional!
- Suitable for beginners and experienced students
- BWY qualified and insured

Please call Helen Johnson

Tel: 07792094989

Email: clearskiesyoga@hotmail.co.uk

Defibrillator Fund

Studley Parish Council would like to thank the following donors for their kind donation.

- Dyers & Son Funeral Directors
- Deputy Dog Line Dancing
- Members of public purchasing raffle tickets at Award Evening & Christmas Fayre
- Donation from local business
- Maureen Rickhards for the donation of painting for auction at Award Evening
- Women's Country Club
- Studley Parish Councillors
- Find Your Voice
- Studley Community Library Volunteers



Complementary Holistic Therapies

**Are you looking for some pampering?
Or do you need to relieve a specific condition?**

I provide a range of fabulous, highly effective complementary therapies that offer countless benefits and are suitable for all ages.

Just one treatment can provide deep relaxation and offer relief from anxiety, fatigue, stress, muscular aches and joint pain.

From Body Massage, Reiki, Reflexology to targeted Pain Relief treatment, there is something for everyone.

Visit my website for more information, email or give me a call to make an appointment.



Contact Lynn on: 07828062805
Email: lynn@sunrosepureliving.co.uk
[www: sunrosepureliving.co.uk](http://www.sunrosepureliving.co.uk)



Update from Studley Citizens Advice Bureau

By : Alan Jarmy

The Citizens Advice Bureau (CAB) drop in service is available in Studley Village Hall on the 1st & 3rd Tuesday morning of the month 10 am – 1pm.

It has been operating for nearly a year and has seen some 100 clients, mainly from Studley.

Typical issues cover Housing, Benefits, Debt, Consumer or Relationship issues. If client's problem cannot be sorted at the initial meeting with the Gateway Adviser, then appointments are made at Alcester or Stratford. All sessions are free of charge



Studley Community Library

By Joan Wallin

We have been running for 9 months and the service is progressing. We are told we are of value to the community and thank everyone for their support. We would like more people to join and the Christmas Fair in December enabled us to show what we could offer to a wider group of people and from this were able to sign up a number of new members. We still offer most of the services the County Library did.

A social evening on February 1st was well supported. James Cresswell, a local author gave a talk on Agatha Christie and it was followed by themed quizzes and 'whodunits'. We would appreciate any suggestions for future events.

The link with the Local History Society has been restored and we are selling copies of their magazine. They have offered to put together themed displays of local photographs to be exhibited in the library from time to time. We look forward to receiving the first of these in the near future and welcome suggestions about any other themes to feature in the future.

We have been monitoring usage of the library and have found that there is very little during the last hour on Tuesdays and Thursdays. It has been decided to adjust the opening hours on those two days to 10am – 4 pm continuously. Fridays and Saturdays opening times will be from 9:30am – 12:30pm. These changes come into effect on March 1st 2013.

Schools and younger readers

By Sue Werner

Since January St Mary's RC Primary School has been bringing a class of children across to the library every fortnight. Half go into the library and explore the books with one of our volunteers and school staff, while the other half has storytime with another volunteer. We hope to encourage more children to enjoy reading and get involved with the library through this scheme. The week of 26 January was National StoryTelling Week and it started with the first visit of Studley Children's Centre families and finished with the Agatha Christie/Quiz night.

In the half term holidays we have been offering free DVD loans to children. We are planning to get trained so we can offer the Summer Reading Scheme this year, where children have a challenge to read a number of books in the summer holiday. We were not able to do it last year. We are also going to be trained to take part in Bookstart Bear Club, for under 5s and school children. All of this is with the aim of helping more young people enjoy reading.

THE HUB *from*

Bromford
Support 

It's now 6 months since the HUB opened its doors for People with Learning Disabilities. From an expected slow start The Hub is now seeing people through its doors every day, accessing information, advice and courses. Some of these courses are taking place in the HUB by outside agencies.

The Hub also has a couple of volunteers Daniel and Sue both locals who are also here to help.

The courses running at the moment are

Adult Numeracy on a Wednesday Afternoon

Photography on a Monday morning

Art and Crafts on a Friday Afternoon

Line dancing on the last Friday of every month.

It is also hoped to have an Online Basic Computer course and an Adult literacy course. When the better weather comes there will also be a Fishing Group.

On the fishing note the group urgently need fishing tackle so if anyone has any tackle they could donate that would be appreciated.

So the HUB will go from strength to strength and help people in Studley and the surrounding area to achieve **their goal**

Opens Monday- Friday- 9:30 am – 4:30pm

Studley Village Hall, High Street, Studley

Tel no: 01527 854489

Email: trevor.underwood@bromford.co.uk

AVON
the company for women

Did you know? **AVON** is one of the world's leading direct selling companies of beauty and beauty-related products.

Interested in seeing an **AVON** brochure?

Please contact:

Sarah Higgins

Independent **AVON** Representative

Tel: 07941 350507

Email: higgsarah@gmail.com



Studley Parish Council Village Awards

Judging will take place in July for the Village Award for the Best Kept Garden. There are a number of categories so we hope all residents will start planting their gardens to enhance the look of the village.

Your garden could be the winning garden.



Tips to help you on your way to that Beach Body!

Eat 5-6 small meals throughout the day!

Ideally every 2-3 hours, never skip meals as this makes the body think food is in short supply and as a result will start to store food as fat when you do eat. This is especially true when you skip breakfast.



When you skip breakfast, the body panics and goes into fat storing mode.

Keep your protein intake high!

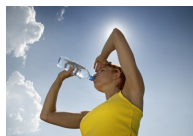
Protein is vital for repairing cells, skin, bones and building lean muscle. You can't get fat by eating protein. Examples of protein are Chicken, Tuna, Cod, Turkey...

Keep your Carbohydrate intake low!

Many people think too much fat in their diet is the cause of their weight gain when the truth is its too many carbohydrates.

Carbohydrates are great for giving you instant energy to be able to work out but they also make fat if you don't expend the energy. So carbohydrates are fine before, during or immediately after a workout.

The rest of the time eat complex carbohydrates like oats, apricots, oranges, plums, pears, grapefruits and prunes but eat these early on in the day.



Drink plenty of water throughout the day!

Water aids weight loss!! Simple but so effective, consume 2-3 litres a day! Carry a 2 litre bottle of water with you throughout the day so you can monitor exactly how much water you're consuming. You'll be surprised how easy it is to drink 2 litres a day.

Top Tips:

- Don't eat carbohydrates before bed.
 - Incorporate cardio training into your weekly routine
 - Don't snack between meals.
- Get plenty of sleep every night (including weekends)!



For more information on classes, personal training and other services visit www.almfitness.co.uk or call Amy 07740 366419 or



Open every Monday & Tuesday from 10 am - 12pm.

Meet your friends and new friends whilst enjoying freshly brewed coffee or tea and delicious home-made cakes.

Bookings can be made for private parties.

Contact: Studley Parish Council on 01527 853204

FIND YOUR VOICE



Studley based individual singing coaching and fun community singing group to improve your confidence to sing.

For further details contact Claire on 07944 100 189



Studley Parish Council Precept

Some residents in Studley have asked Studley Parish Council what services that the precept provides for them.

The following are example of some of the services provided

- Maintains and run the street lighting in Studley.
- Maintains and run the recreation area in Crooks Lane, including provision and maintenance of play equipment, Skatepark, seating & litter bins.
- Maintains the Public Open Space at the rear of St. Jude Avenue.
- Maintains Brickyard Lane recreation ground.
- Provides and maintains Allotments on Station Road & Redditch Road.
- Provides and maintains Studley Parish Cemetery.
- Provision of litter and dog bins.
- Provision of Parish Warden with responsibility for prevention of dog fouling(this is recently created part-time position and is carried out by our grounds contractor within his current role)
- Grass and hedge cutting in various areas of Studley including the recreation areas.
- Proactive to ensure WCC and SDC carry out the functions they are responsible for eg: highways maintenance, rubbish collection- it is the Parish Clerk who pursues the councils when bollards are damaged/destroyed, litter bins not emptied, grass verge not cut etc.
- Christmas lights
- Bulky waste collection on 1st Saturday of the month in Pool Road Car park- for residents only.
- Services of Lengthsman to carry out ancillary maintenance in village (subject to funds being available).
- 12 Parish Councillors who actively oppose loss of green belt and are proactive with regards to planning applications.
- 2 Council Meeting per month with public forum slot of 3 minutes per person.
- Twice year newsletter and website regularly updated with relevant information.
- Parish Council arranges and supports local events eg; Diamond Jubilee Celebrations, Remembrance Day Parade, Studley Christmas Fayre.
- Leases buildings to Studley Sports and Social Club, ATC & Village Hall
- Successfully fought to maintain Library provision in Studley (now in Village Hall) and maintains the facility which is run by volunteers.
- Provision of 2 part time administrative staff


For a reliable, friendly service call Andy for a free competitive quotation

All aspects of building works & property maintenance undertaken, with 17 years of experience

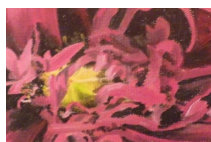


- Extensions
- Alterations
- General repairs
- Patios
- Boundary walls
- Fire places
- Conservatories
- Porches
- Re-pointing

all aspects of building work taken



Andy: 01527 270011
Mobile: 07843 584 772
e-mail: andrewbiddle@rocketmail.com



Artists Studley **'Bourgeoning Dialogue'**

Artists Studley, Chris, Dawn, Jo and Maureen would like to invite you to their first Art Exhibition entitled: 'Bourgeoning Dialogue' at

Studley Village Hall
High Street, Studley
Saturday 11th May 2013
10 am – 4pm



“Wild plant charity Plantlife (www.plantlife.org.uk), are hoping to reach out to many wild plant enthusiasts and nature lovers in parish communities by inviting them to become wild plant 'pioneers' and subscribe to a free quarterly

e-learning bulletin to learn more about our native wild plants via the 'Wild About Plants' project website - www.wildaboutplants.org.uk . The May e-bulletin will be coming out shortly and is looking at the relationship between pollinators and our native wild plants and is packed with interesting articles, facts and folklore. The Wild About Plants project aims to help people reconnect with the outdoors and their local green spaces. Working with schools, families and communities from all walks of life and with fantastic free downloadable resources, the team hope to engage people with the nature on their doorstep. In recent years subscribers have been asked to record the plant life in their local area and recount what they used to see/pick and forage for. The newsletter will also give readers the opportunity to find out what Plantlife are doing to help our rare and threatened plants in different parts of the UK.

Wild About Plants is funded by Natural England through Access to Nature, as part of the Big Lottery Fund's Changing Spaces programme. It is a partnership project involving partner organisations throughout the country.

Finally, did you know that the county flower of Warwickshire is the honeysuckle (*Lonicera periclymenum*)? This deciduous climber is famous for its heady scent on summer evenings. It favours woods and hedgerows and flowers from June to September. Honeysuckle is Shakespeare's 'woodbine' – In *A Midsummer Night's Dream*, Puck knew a secluded bank “quite over-canopied with luscious woodbine”. It was a fitting place for a love-tryst considering honeysuckle's heady scent and suggestive twining growth.



OUTREACH PROJECT! (STUDLEY CHURCHES TOGETHER)

By Sue Ludlow

Have you ever walked through the area by the Millennium Gate into the skate park area on a Friday evening between 7:30pm and 9 p.m. and seen a group of between 3 and 4 adults serving drinks from a small table to a group of youngsters?

You have? Well, you have probably wondered what it was all about. For almost two years now a group of volunteers from Studley Churches have gone out amongst the youngsters of our village who are either meeting their mates on the skate park, or just walking through on their way to other places, or even some who have nothing else do to but wander around all evening.

We have been providing hot and cold drinks and biscuits for any of them who would like it and this has been very successful and very much appreciated when it's cold and wet and especially when the snow has been bad.

The youngsters regularly make the comment "How much is it" and have been very surprised when we have told them its free, because all the resources needed are donated by people in our churches and other organisations that have heard about what we are doing and think it's a great way of showing that we care about the youngsters we meet up with. We also have donations of money which we can use when we need new flasks or other equipment to enable us to carry on this outreach project.

The minority of people has labeled these youngsters that hang around the village as trouble makers but they have accepted us on "their territory" and it's great when we turn up on a Friday evening to find some of them already waiting for us. We have not come across any violence or bad behavior - in fact most of them are

very polite and if there is any bad language spoken its usually one of the youngsters that puts a stop to it in our presence. Even the police have noticed that there is not as much trouble in the early evenings in this area. So hopefully what we are doing is having some positive effect.

Here are a few of the comments the team heard during a recent evening:-

- Are you still here braving the cold?
- I think it's the best hot chocolate I have ever had!
- I've walked all the way from Redditch just for this!
- Hot Chocolate, how much is it? - It's free!!!! Why do you do it?

We do it because we have a ministry and a mission to be out amongst those who need to know that they are loved for who they are.

Thank you for taking the time to read this article and if you would like to see the project in action all you have to do is walk down and find us any Friday night.

You are welcome to a hot chocolate - Guess what?? IT'S FREE!.



**Bespoke, Hand Built
Furniture & Refurbishments
(17 years of extensive
experience.)**

Small & large projects undertaken in all areas of the home and office- interior & exterior. (including kitchens, bedrooms, doors & desks)

**Contact: Iain Ward
Mobile: 07877 202 928**

Email : iain@sundalejoinery.co.uk



GARDENING TIPS

By Studley in Bloom Team

HANGING BASKETS

- Cut a piece of polythene or black bin liner to fit the basket.
- Line the basket with moss and place the liner over the moss. You will need to cut some holes in the polythene to push the roots of some plants through from the outside.
- Fill the basket a third of the way up with compost and plant a row of trailing plants.
- Fill two thirds of the way up with compost and plant another layer of trailing plants.
- Fill to the top with compost and plant the final layer of plants.
- Place the basket in a sheltered spot or in a greenhouse on an upturned bucket or pot for at least two weeks to allow the plants to become well established before hanging it up. Keep it well watered and fed.

SUGGESTED PLANTS	10 Inch Basket	12 Inch Basket	14 Inch Basket
Upright Geraniums/Fuchsias/Begonias	1	2	3
Trailing Geraniums/Fuchsias/Begonias	4	6	8
Trailing Verbena/Surfinia/Million Bells/Sanvitalia	4	6	8
Trailing Lobelia	6	8	10

Aftercare

- Water the basket once or twice every day and make sure you soak the basket right through.
- Moss can be kept moist by spraying or soaking in a tub.
- Liquid feed the basket twice a week.
- Remove dead flowers and watch out for pests such as greenfly.
- REMEMBER – a shower of rain is not enough to water a hanging basket!



South Warwickshire Credit Union Ltd

Your local choice for savings and loans.

The Credit Union is here to help. Start saving any amount, large or small. Pay by standing order.

Small loans are available from £100.00, subject to terms and conditions. No charge for early settlement. Representative APR 12.7%

Speak to our office manager on 01789 261505

6 Windsor Court, Greenhill Street, Stratford upon Avon

CV37 7GG

www.southwarwickshirecreditunion.co.uk



A. Dyer & Sons

Complete funeral directors

Family business

established 1945

Tel: 01527 852213

Mobile: 07860 252 797

23 Alcester Road

STUDLEY

Warks B80 7AG

Studley Village Hall

Are you looking for a venue for that special celebration? The Studley Village Hall will be your perfect choice. The hall is fully equipped to meet with all needs, be it a children's party, wedding reception, staging a theatre production or simply somewhere for a meeting, for more information give us a ring on the number below or visit our website at

01527 853 205

www.studleyparishcouncil.org.uk



Volunteers in Studley

The main quality a volunteer has to have is enthusiasm. This enthusiasm plays a huge part in the well being of the Village.

The reason why people volunteer varies from one person to another; however all seem to be motivated by the desire to have an all round better community.

There are many volunteer groups in the Village whose main objective is to get things done for the Village. They have learned over the last years that the act of volunteering can make a difference. To make this difference, the volunteers have had to learn patience, deal with frustration and the ability to negotiate with statutory, voluntary and private sector organizations. Many have gained an in-depth knowledge of issues and acquired skills that have come naturally to them, but never suspected they had.

In making their contribution many have had the support of Studley Parish Council who are themselves volunteers, but likewise are willing to give up time often at their own expense.

It is difficult to pick out one group for particular praise because some of the work can be seen and is on display. Other groups work behind the scenes or work in co-ordination with other groups. Other volunteers help out on as and when needed basis. Every contribution is of equal worth.

Much of the volunteering in Studley does not have the glamour of rushing to a natural disaster and is highly unlikely to make the front page of a national newspaper. It is the sort of volunteering that makes sure the community is somewhere we want to live. Perhaps this is a reward in itself but some times a thank you should be said in public and through the Parish Magazine as perhaps the longest serving representative I would like to say thank you to all our volunteers. One day a volunteer might feel tired, not well or whatever, remember your effort will not have gone unnoticed and has made a difference so thank you for what you do.

Hazel Wright
Ward Member



**VINTAGE
&
RETRO**

CLOTHING
& ACCESSORIES
BONE CHINA
FURNITURE
CUTLERY
JEWELLERY
CURIOS
CLOCKS
HABERDASHERY
MIRRORS
COLLECTABLES
LINEN & FABRIC

**ODD
CHINA
CUPS AND
SAUCERS
& CAKE
STANDS**

Reminisce



**OUR PRICES
START FROM
AS LITTLE AS
50P,
SOMETHING
FOR
EVERYONES
BUDGET !**



21C HIGH STREET
STUDLEY

01527 909 545

WWW.VINTAGESTUDLEY.CO.UK



Find us on
Facebook

WE ARE OPEN FROM 10AM AND WE ARE
LOCATED ON THE HIGH STREET 100
YARDS UP THE HILL FROM THE BARLEY
MOW ON THE RIGHT HAND SIDE. ALL OUR
CUSTOMERS ARE WELCOME TO PARK FOR
FREE OUTSIDE.

CLEARING OUT YOUR LOFT / GARAGE / CUPBOARDS ?
WE ALSO BUY QUALITY VINTAGE AND INTERESTING ITEMS



Save a life at the Studley Blood Donor Session

NHS Blood and Transplant (NHSBT) is reminding Studley Residents to continue to 'Save a Life and Give Blood'. Whether you are an existing blood donor or thinking about giving blood for the first time, help support your local session and make an appointment to donate.

Studley Village Hall
High Street

Thursday 16 May, 11 July & 8 August

Time: 1:30pm – 3:30pm & 4:30pm – 7:30pm

Donated blood is used to save the lives of sick and injured patients every day. It helps not only in accident and emergency situations, but also patients undergoing surgery and receiving treatment for cancer and blood diseases, such as leukaemia



Last Night of the Proms Concert

relayed live from the Royal Albert Hall to Studley Village Hall

on

Saturday, 7th September 2013

brought to you by

Studley Daytime WI

Tickets £13.00

(available from end of April)

Includes Fish and Chip supper

Please bring your own wine and glasses

For more details

Contact Carol Johnson 01527 857 249

or Anne Rolfe on 01527 852678

Adrian Smith

& Sons. CIOB.

Est.1978

Central Heating, Gas, Plumbing & LPG.

For all your heating & plumbing
needs

(01527) 854717



Dates for Bulky Item Collection Services

6th April

4th May

1st June

6th July

3rd August

7th September

Time: 10 am – 12 pm

Residents are not to leave any items at other times as this is fly tipping and liable for prosecution. Use green bin for your garden waste. Suspected commercial waste will not be accepted.

Studley Village Hall needs your help

Studley Village Hall will be celebrating its 10th anniversary since the day it opened. Unfortunately the people who worked hard to secure the new Village Hall and manage it have also got 10 years older. Realizing that time was turning pages they wanted to secure the future of the Hall, as they always intended to be there for future generations of the community.

To do this Studley Parish Council has agreed to take over the responsibility of the Hall. However this now means a different way of running the Hall as the law will not allow them to do this directly if the Hall is to remain as a charitable community facility

The Parish Council has to ensure that a Village Hall Management committee is in place and is capable of adapting to modern circumstances. Parish Councillors are advised not to serve on the committee.

This means there is now a need for new active, vibrant governance that can take a cradle to grave approach to the community the Village Hall serves. In other words be there for everybody in the Village.

Attributes of a successful village hall

- a trustee body that is diverse
- a building that meets legislative requirements
- an effective means of communicating and consulting with local people and understanding their needs
- a funding regime that is sustainable
- a strategic plan
- common sense

Volunteers play a crucial role in the running of the Hall, without them there would no Hall. It needs your help to ensure that it is there for the well being of the Village. The Parish Council is looking for volunteers with many skills to meet the attributes that are needed. If you have any of the following skills; financial, legal, management, social, common sense and interest in people

If you are motivated about caring for the Village think about becoming a volunteer at the Village Hall. Your act of caring is more valuable than money. You would be helping to retain a valuable asset to the Village.

Please contact: Linda Stanton, Studley Parish Council.

Email : clerk@studleyparishcouncil.org.uk

Tel No : 01527 853 204



Can anyone help?

Article written by: Pamela Minchin

I hope this article will be of interest to readers as some of my family originated, from Studley.

Recently I found a 1916 copy of the Parish Magazine among my late father's papers.

He was Lawrence Talbot, born in Studley on 25.9.1916 and baptised in St. Mary's by Rev. J.N. Knottesford-Fortesque, cited in the old magazine. His mother was Hilda Eliza Treadgold, born in 1893, the 8th of 11 children born to Thomas Richard Treadgold, a plasterer, and his wife, Mary Ann (nee Summers).

In 1901 the family home was in Redditch Road and later at The Poplars, Watts Road, from where, in 1915, Hilda was married to Lawrence Talbot, then a First Class Stoker on board Torpedo Boat 24 in the Royal Navy. The ceremony was conducted by the curate, D. Michael Laus and their wedding photograph is, I think, very evocative of the period, and also quite glamorous for wartime.

They had 2 sons, Lawrence and Thomas, and moved frequently during my grandfather's subsequent prison officer career. One of the interesting findings when researching one's ancestors is the common practise of giving offspring a family name, particularly the firstborn son. I have continued this with my own daughter and son.

On retirement Lawrence and Hilda moved near us in Leicestershire, where she died in 1976, aged 83, and we brought her ashes back home to St. Mary's churchyard. I have very fond memories of them both: my grandmother as a tiny, genteel woman, who liked gardening and also the occasional, discreet Park Drive and grandpa quoting Shakespeare to me and the tattoo of a glorious sailing galleon on his chest!

I would be pleased to hear from anyone with memories or information of my family. Contact me on pamichin@hotmail.co.uk



STUDLEY FESTIVAL AND FUN DAY

This year the Festival will be held on Saturday 13th July on the Studley Sports and Social Club Sports field in Eldorado Close beginning at 12 noon and continuing through to the evening. There will many more stalls, stands and exhibitions than before plus the Pig Roast, Bouncy Castle and Fun Fair.

The Club Bar will be open all day and if you have never been in the club feel free to look around at the facilities. The club is not restricted to “members” this is village facility open to everyone and anyone.

Talk to the Committee Members on the Club Stall.



The Best & Friendliest Social Club
Studley Sports & Social Club
Eldorado Close, Studley
Tel No: 01527 852671
www.ssscentaco.co.uk

GAIL'S CAKE PANTRY
YOUR CELEBRATION IS OUR CREATION



Your celebration is our
creation!

From birthdays to weddings,
Fruit cakes, sponge cakes,
cookies galore tray bakes and
cupcakes, need we say more.

Ring Gail on: 01527 521985
Mobile: 07500654003
Email: gail@gailspantry.com
www.gailspantry.com



Studley Allotments

Fancy growing your own produce? Studley Parish Council has plots available for lease. Please contact Studley Parish Council on 01527 853 204 if you are interest is having an allotment plot.

The Parish Council is committed to ensuring plots are maintained and cultivated in line with the tenancy agreement. If you are having difficulty maintaining your plot please contact Studley Parish Council to discuss your options.



**STUDLEY ASSOCIATION OF
NEIGHBOURHOOD WATCH SCHEMES
(SANS)**

Studley Neighbourhood Watch

Tel: 01527 857831

Email: jimbacon@blueyonder.co.uk

"Crime cannot flourish in a community that cares"

NEWSLETTER

April 2013

**THE ANNUAL GENERAL MEETING
OF STUDLEY NEIGHBOURHOOD WATCH ASSOCIATION
WILL BE HELD ON THE 10TH OF JULY
AT 7:30 PM IN THE VILLAGE HALL
ALL RESIDENTS ARE WELCOME**

Please support your Association

COMMUNICATING WITH THE POLICE

In an emergency dial **999**

To report a crime or serious incident telephone **01926 415000** or **101**

To contact Alcester North Safer Neighbourhood Team **01789 444816**

To contact PS Bob Shaw (Team Sergeant) Voice Mail **10542**

To contact PC Simon Bennett (Beat Manager) Voice Mail **11536** or Mobile
07920 531450

To contact PCSO Gary Johnson Voicemail **16111** or Mobile **07789 653018**

Email: alcesternorth.snt@warwickshire.pnn.police.uk

Call **Crimestoppers** anonymously with information about crime on **0800 555 111**

(Crimestoppers is a Charity who will pass on information to the police without revealing any details of the caller. You may also receive a reward)

FREE HOME RISK ASSESSMENT

The local Safer Neighbourhood Team are willing to spend up to approximately 40 minutes assessing the risks your house presents in allowing a possible burglary to happen. After having identified the weak spots they will leave you with the information to process as you feel necessary. Please take this opportunity to understand the security level of your property.

Please contact PCSO Dave Martin on **0792 3288641** or

e mail david.martin@warwickshire.pnn.police.uk

HOW AWARE ARE YOU?

Do you know what crime is happening around you, are you aware of what types of crime are happening in neighbouring towns and villages and do you know what you can do to prevent crime happening to you?

Studley NHW attempts to keep you informed by encouraging the Police to issue the monthly SNT Newsletter, by keeping in touch with other NHW groups in the county and reporting on incidents raised by local residents. With the excellent support of the local PCSOs we can let you know about burglaries within hours of them being reported and how entry into the property was gained.

We keep you informed of the latest scams and “urban myths”; these are false E mail scams encouraging people to alert their friends, the internet equivalent of chain letters

Police Crime Prevention Officers will advise on security of your property. Crime prevention products, such as **SMARTWATER** are available at discounted prices.

This information is issued by E mail , it is a blind copy, no one in the group sees your E mail address, if you wish to be kept aware please forward your E mail address to jimbacon@blueyonder.co.uk

We are on **Facebook**; messages about local crime are also posted on www.facebook.com/studleynhw

Available from NHW Association

The Association supports the individual Street schemes with the following:

Starter Packs these have been designed to assist the start up of a NHW scheme and contain all the information you need if you would like to organise a NHW group in your street.

Fact Sheets are available from the National NHW and cover such topics as *Home security, Bogus Callers, Personal Safety, Good Neighbour Fact Sheet, Happy Holidays and Vehicle Crime*

Quick Alert Messages are generated by residents reporting suspicious events to the Association and sent out by E mail; if you wish to receive such information please forward your E mail address to the Association.

CAPS/ Police messages are sent out about burglaries and are forwarded to individual houses by the street coordinator.

Door Stickers are available to show you are a member of a NHW scheme, that you have coded your property or that you do not buy anything at the door. All are deterrents to the burglar.

Property Coding Kits are available on loan to post code your property each kit contains an electric engraving tool, permanent marker pens, UV marker pens, UV torch and special labels.

Residents Recommended Tradespersons Register. The Association has compiled a register of Resident recommended tradespersons.

Tamper proof numberplate screws are available free either from the Police or NHW, prevent your number plates being used in the theft of fuel, breaking the speed limits or even used in the committing of a crime.

G S Adams Ltd.

Your local electrical contractors

G S Adams Ltd. are your local NICEIC electrical contractor based on Station Road in Studley.

From fault finding and repairs to rewires and new installations, we are your local experts.

For all your domestic, commercial and industrial installations, call us first or pop in and see us at our offices to discuss your requirements.

Our management team has many years experience in the industry, giving you the reassurance that we know what we are doing, and are able to provide the right job at the right price.

For a free no obligation quotation call us on

01527 857718

SOLAR PANELS: THE FACTS

Many of you will have seen offers offering FREE electricity and "TOO GOOD TO BE TRUE!" in the newspapers and magazines, on television, and on the radio. If you really want to know the truth talk to us first.

As a well established electrical contractor we understand the technology behind these offers, and are not out to make a fast buck and leave you with an expensive "white elephant" on the roof.

Yes you can get electricity for free, and yes you can get paid for generating it for others to use. By utilising the "feed in tariff" scheme, you are paid for any electricity you generate from solar photo voltaic cells installed on your roof.

Most houses, shops, offices and factories are suitable for installing photo voltaic cells. Once installed by an approved company, you get paid for everything you generate even if you use it yourself.

A basic scheme will generate around £700 of income a year and will help to cut your electricity bill. Installation costs start from around £4,500.00.

Payments are guaranteed for 20 years so within around 10 years the system will have paid for itself, and that is based on today's energy costs. As electricity prices increase the benefits will also increase.

If you would like to know more about this "green" technology just give us a call, or call in to our offices to see a system in operation.



THE
LIGHT HOUSE

SUPPLIERS AND INSTALLERS OF
QUALITY LIGHTING PRODUCTS

Opening Times
Tues Sat 10am-6pm Sun Mon Closed

TEL: 01527 857715

10% off with this adverb (readable copy)

STATION - CUBE, 33 STATION ROAD, STUDLEY, WATWICK CV36 7UB

G.S. Adams Ltd
ELECTRICAL CONTRACTORS AND INSTALLERS

Industrial, Commercial & Domestic
(Electricity, Air Conditioning, Gas, Oil, Gas, Oil)

- Established 20 years +
- Reliable and Professional
- Installations, Maintenance or Repairs
- Periodic Inspections and Testing
- Part P Approved




Tel: 01527 857718 Mob: 07888 296029
www.gs-adams.co.uk