



Spring & Summer

STUDLEY
VOICE



2015

Annual News Roundup- 2014

2014/2015- Annual Parish Meeting

Studley Parish Council held the Annual Parish Council Meeting on the 6th May 2014. The residents that attended the meeting were able to listen to various voluntary groups in the village present their reports and activities to the Parish Council. Cllr Julian Ingram was voted unanimous as Chairman of Studley Parish Council for 2014/2015 by his fellow Parish Councillors.



Cllr Julian Ingram receiving the Chain of Office from the outgoing Chairman
Cllr Mrs Sue Redman

Studley Parish Plan



The Parish Councillors have been busy putting together the Parish Plan. The Parish Plan is now ready for submission to Stratford District Council for approval. Once the plan has been accepted by Stratford District Council, copies of the plan will be published on the Parish Council's website and hard copies will be available to view at the Parish Council.

Studley Parish Council Awards Evening

The Chairman of Studley Parish Council, Councillor Julian Ingram and his Consort Mrs Suzy Woodward- Ingram hosted the Annual Parish Council Awards Evening on the 27th September held at Studley Village Hall. The purpose of the Awards Evening was to mark the achievement of volunteers who have worked tirelessly within the Studley Community.

Mr Josh Summers was awarded the Youth Shield for his contribution to Studley Community Library. The Millennium Shield



Cllr Mrs Hazel Wright receiving her Silver Jubilee Award from Cllr J Ingram

Award was won by Studley History Group. Cllr Mrs Hazel Wright was awarded the Silver Jubilee Award for her service to Studley Community. Awards were also awarded to the Best Allotments, Garden Frontage, Best Commercial and Retail. The event was very well attended.

During the evening a total sum of £2000.94 were raised for SSAFA, (Sailors, Soldiers, Army Forces Association) the Chairman's chosen charity.

Cllr Ingram served 6 years with the Parachute Regiment and during the Falklands War. SSAFA helped him by organising funding from the Airborne Forces which allowed him to afford the cost of University. Since completing his degree in Business, he went on to achieve master's degree in Procurement and became a fellow of the Chartered Institute of Procurement & Supply. SSAFA helped him get his career started after he left the Army.



**Col. Tony Ward- Chairman of SSAFA
Worcestershire & Cllr Julian Ingram**



**Josh Summers receiving his
Youth Shield Award from
Cllr Julian Ingram**



Studley War Memorial- © Mr Terry Burton

Through the generosity of the residents and the pupils of Mapleborough Green Primary School, Studley Infant School, Coughton Primary School and St. Mary's Catholic School the Studley War Memorial was restored just in time for the annual Remembrance Sunday. The two minutes silence was held at 11am, followed by the Laying of Wreathes, singing of hymns and reading the dedications

Studley Christmas Lights Switch On & Christmas Fayre

Studley Parish Council, Studley Christmas Lights Committee & Studley Village Hall Management Committee celebrated the festive season to with a Christmas Lights switch on which was held outside the grounds of Studley Village Hall on the 5th December.

Ashley Hodges (Studley High School), Ben Smith(St.Mary's CE Academy), Clive Fletcher (Studley Infant School), Brandon Dolan (St.Mary's Catholic Primary School) Ella May Todd(Studley Christmas Light Committee) and Santa was on hand to help the Chairman of Studley Parish Council, Cllr Julian Ingram and his Consort Mrs Susy Woodward- Ingram to switch on the Christmas Lights.



© T. Burton

The switch on was made possible by Studley Christmas Light Committee (formed by a group of residents) who decided to raise funds for the replacement of the old lights. Funds were raised through grants from Studley Parish Council, Warwickshire County Council, local businesses and events organised by the group.



Over 20 small independent traders set up stalls in the Village Hall offering a wide range of seasonal goods and gifts. The fayre was well supported by the residents. Find Your Voice Community Choir entertained the shoppers with a medley

of Christmas Carols. Stall holders were pleased with the large attendance in the Village Hall and the level of sales they achieved.

Children brought their Christmas lists to tell Santa what they hoped to receive on Christmas morning. Santa's Grotto was decorated with snow, Christmas trees, snowmen, reindeers and fairy lights. Funds raised from the fayre were used to make charitable donation to SSAFA and help towards the running cost of the Village Hall.





What is a Parish Council and why become a Parish Council?

A Parish Council is a local authority that makes decisions on behalf of the people in the parish. It is the level government closest to the community, with Stratford District Council above it in the hierarchy.

**Adrian
Smith**

& Sons. CIOB.
Est.1978

**Central
Heating,
Gas, Plumb-
ing & LPG.**

For all your heat-
ing & plumbing
needs

(01527) 854717



As it is the authority closest to the people, parish councils are invariably the first place people will go with concerns or ideas. For this reason they are a vital part of any community.

There are 2 common misunderstandings about the role of parish councillors. They are not employees or volunteers; they are elected representatives who volunteer their time for free to work on behalf of their community.

By becoming a parish councillor you become someone your community will look for help, guidance and support a community leader with the power to influence decisions for the benefit of the people you serve. Seeing your community change for the better, as a result of decisions you have helped make, is something that can give you a sense of achievement and pride.

Main Duties and Responsibilities

- To participate constructively in the government of Studley Parish Council.
- To participate fully in the formation and scrutiny of the Parish Council's policies, budgets, strategies and service delivery including the Parish Plan and Neighbourhood Plan.
- To ensure, with other Councillors, that the Parish Council is properly managed.
- To keep up to date with significant developments affecting the Parish Council at local, regional and national levels.
- To promote the economic, social and environmental well-being of the Parish taking account of the strategic effects on other communities and the Parish Council as a whole.
- To represent effectively the interests of the ward for which the Councillor is elected and deal with Parishioners enquiries, representations and concerns.
- To represent the whole electorate and not just for the people that have voted for you.
- To listen, and then represent the views of the whole community when discussing council business and working with outside bodies.
- To attend twice monthly Council Meetings. To participate effectively as a member of any committee or working party to which the Councillor is appointed.
- To attend regular training.
- To prepare for meetings and being properly informed about the issues to be discussed.
- To take part in meetings and form sound judgements based on what is best for the Community (not just the views of people who have voted for you) and then abide by the majority decisions.
- To represent the Parish Council on outside bodies to which the Councillor is appointed.
- To maintain proper standards of behaviour as an elected representative of the people.

- To fulfil the statutory and locally determined requirements of an elected member of a Local Authority and the Parish Council, including compliance with all relevant codes of conduct and maintaining high ethical standards, (including not disclosing confidential information and using council resources for political purposes or for any other reason unless agreed by the Council)
- To uphold the Parish Council's Standing Orders and ethical standards (ensuring that the impartiality of Council staff is not compromised)

Am I eligible to be a Parish Councillor?

To stand for election on a Parish Council, you must:

- be a UK or Commonwealth Citizen, or;
- be a citizen of the Republic of Ireland, or;
- be a citizen of another Member state of the European Union;
- be at least 18 years old.

To be eligible to stand for an election for a particular parish, you must:

- be an elector of the parish or;
- during the whole 12 months they have either occupied as owner or tenant land or other premises in the parish or;
- their principal or only place of work is in the parish.

You do not have to be connected to a political party.

Parish Councillors are available to meet residents on the first Tuesday of the month at 6:30pm prior to the Parish Council Meeting or on Monday & Tuesday at 10 am – 12 pm in the Village Hall foyer to discuss any concerns that you may have.



Dates for Collection

4th April 2015

2nd May 2015

6th June 2015

4th July 2015

1st August 2015

5th September 2015

3rd October 2015

7th November 2015

5th December 2015

Time: 10 am – 12 pm

Residents are not to leave any items at other times as this is fly tipping and liable for prosecution. Use green bin for your garden waste. Suspected commercial waste will not be accepted



Studley Village Hall

Are you looking for a venue for that special celebration? The Studley Village Hall will be your perfect choice. The hall is fully equipped to meet with all needs, be it a children's party, wedding reception, staging a theatre production or simply somewhere for a meeting, for more information give us a ring on the number below or visit our website at

01527 853 204

www.studleyparishcouncil.org.uk

Carers Support Group

Meet every third Tuesday of the month at Studley Village Hall

2pm – 4 pm

All carers are welcome

Role of the District Councillor Stand for what you believe in



We are often asked what Councillors do. Well Councillors are local people elected to represent their community, which puts the Councillor in a unique and privileged position. When first asked to stand for election you are usually assured the main role is to represent your ward or division. This means going to a few

meetings every year at the Council Offices in Stratford –upon – Avon. One of the lessons that our team soon learns if you really want to represent the people of your area going to meetings mattered, but more importantly was how you keep in touch with residents, listen to what they say and what matters to them. To do this and completely understand your community you need to be completely immersed in the grass roots of the community of which you are a member. If you are passionate about your community, this is not just physically hard work but can be emotionally draining.

The main role is to represent your community; to act as its spokesperson, this can be done in many different ways, not just on Council business but on things that matter to the Community; It is called community leadership. A good example of this the threat to the A and E services at the Alexandra Hospital. Any reduction or availability of services becomes a threat to the ability of some Studley residents to easily access services. Residents say “I would rather go the Alex than Warwick”. This clearly tells my colleagues and I that we have to campaign on behalf of our area. Supported by residents and councillor colleagues it involves lot of leg and paper work, but hopefully will be well worth it

Working with residents and groups in the village is a powerful way to bring pressure where and when it is needed. A recent example of this is, this year a group of residents concerned about anti – social behaviour came together led by elected members to look for a way forward. A library volunteer said that when the library volunteers suggested to library users “have you told the police, the response was usually it is a waste of time.” Hearing this expression of negativity helped to form the basis of a campaign for more police presence; we now have a new Police Community Support Officer called Adeela Hussain whom we hope to see around the village and will make a difference.

Another example at District Council Level the blight that the Co-op has caused on the village has affected us all; after persistence by the elected representatives supported by the views of residents the District Council in February have finally committed to doing something about the site.

Currently road safety and accident prevention are major concerns in the village, and in conjunction with the Parish Council in an ongoing campaign we are encouraging a Police campaign and pursuing several highways based improvements. We know that we will have to continue to keep pressing on and calling on the support of residents about measurements to secure our road safety needs but any improvements will be worth the work.

Councillors also help residents on an individual basis from signing passport applications to very personal and distressing problems.

As I have explained the role of a Councillor is one of community leadership, but to be effective you need to work as part of a team of Councillors, made up of diverse individuals, who should not only reflect the communities they serve, but have a broad range of skills and life experience to bring to their role. The experiences of village life we have shared with residents allow us to understand Studley, and make us totally committed to retaining and protecting the village atmosphere.

Hazel Wright

Community Resolution Order

With the help of residents and CCTV footage the Police were successful in issuing a Community Resolution order to a group of youth who vandalised the play area at the recreational ground in Pool Road. The police were able to recover the cost of £300.00 for the repair of the equipment for the Parish Council from the group of youth. The youths also sent letters of apology to Studley Parish Council. The Parish Council would like to thank residents for their diligence which has helped to stamp out vandalism in the Village.

Annual Parish Council Meeting

Tuesday 19th May 2015

At

6:30 pm

Council Chamber

Studley Village Hall

***All Members of the Public Are
Welcome to Attend***

Residents will have the opportunity to hear what Studley Parish Council has achieved during the past year and plans for the coming year. There will be news updates from voluntary groups in the Parish

PARISH COUNCIL MEETINGS 2015- 2016

Members of the public are very welcome to attend any of the Council's meetings which are held in the Council Chamber, Studley Village Hall, at 7.30pm on the following dates:-

Tuesday 7th April & 21st April

Tuesday 5th May & 19th May

Tuesday 2nd June & 16th June

Tuesday 7th July & 21st July

Tuesday 4th August & 18th August

Tuesday 1st September & 15th September

Tuesday 6th October & 20th October

Tuesday 3rd November & 17th November

Tuesday 1st December & 15th December

Tuesday 5^h January & 19th January

Tuesday 2nd February & 16th February

Tuesday 1st March & 15th March

STUDLEY CINEMA

Films from May to June 2015



Showing
16th May
Running Time
96 Mins
PG13



Showing
20th June
Running Times
114 mins
PG13

Join the Studley Cinema Film Club.

Annual membership fee £5.00 which allows 4 family members to attend Film Showings at only £4.00 per show. (Must be 16 or over to be members) Film certification will apply.

Tickets can be purchased at the Village Hall from 2 pm – 4:30 pm Monday to Friday in advance to avoid disappointment. Showing time 7pm for 7:30pm.

Tel No: 01527 853 204 Email: studleyvhall@btconnect.com
Studley Film Club reserves the right to change the schedule of programme, times, pricing and to refuse admission.

There will be no Film Club during the months of July & August

Studley Film Club is considering changing the day of the Film Club to an early Friday evening in the summer and a Saturday or Sunday matinee show in the winter. Could you please let us know if the suggested days are better and what movies would you like the Film Club to show? We value your feedback.

Wythall Theatre Company

Wythall Theatre Company is going from strength to strength and we are now in our fifty sixth year! With over one hundred and twenty performances (many critically acclaimed and award winning) we feel stronger than ever.

Our next production will be 'The Vicar of Dibley', this version covers scenes from the first two series of the popular television programme and a proportion of proceeds go to charity.

This comedy will have you laughing from start to finish and is a chance to meet your favourite characters again in the strange world of Dibley from the arrival of Geraldine Granger to the hilarious wedding of dippy Alice and Hugo. We are particularly pleased to be teaming up with Wythall Community Choir for this production that will be providing some of the music used in the show.



Wythall Theatre Company presents

The Vicar of Dibley

at

Studley Village Hall

from

20th - 23rd May 2015

7:30 pm

Box office: 01527 403876 or 01564 823350

Ticket price: £8.00 (for 20th May performance)

£10.00 (21st - 23rd May performances)

No Concession

DUE TO POPULAR DEMAND
STUDLEY VILLAGE HALL WELCOMES BACK
BLACK COUNTRY
COMEDY DUO DANDY



Top husband and wife comedy and vocal act **Dandy** has delighted audiences in the Midlands for many years. Their unique brand of contemporary Black Country humour has made them a very popular act.

Their great strength lies in their original approach to comedy. Using jokes, stories, observations and personal experience, they create a warm, happy atmosphere, adapting the act to suit the audience.

Ticket £9.50 include fish & chips supper

6th June 2015

Open Bar

Studley Village Hall

For tickets contact:

Studley Parish Council: 01527 853 204

Everyone had such a good time last year they request for a return performance.

Book early to avoid disappointment



Studley Cemetery Rules & Regulations

A group of residents have been in contact with Studley Parish Council concerning the revision of the rules & regulations of Studley Parish Cemetery. The revision of the rules was published for consul-

tation at the Parish Plan exhibition in 2013. The revised rules were displayed on the cemetery notice board and on the Parish Council's website. During this period the Parish Council only received 4 comments regarding the revision of the rules and regulations governing the cemetery.

Following the issue of requests to remove items such as solar light, glass ornaments, flags & scarves the custodian of the effected graves notified the Parish Council that they were unhappy with the new rules & regulations. They would like the Parish Council to reconsider the revision of the rules & regulations.

Chairman, Councillor Julian Ingram issued the following statement;
“To ensure the process is democratic, we (Studley Parish Council) reiterate our request to those who are unhappy with the decision taken, to be part of the solution. The Parish Council is keen to engage with both sides of the debate, and consider that democracy would be best served by a Working Party and not mass meeting.”

A Working Party has now been formed consisting of 3 members from the group and 3 Parish Councillors to try to find a way forward on the revised rules and regulations that will be fair to all concerned. Residents will be consulted once a solution has been reached.



REACHING OUT INTO THE STUDLEY COMMUNITY

Stratford Citizens Advice Bureau is about to start a new project in Studley thanks to funding from Stratford District Council, Warwickshire County Council and Orbit Heart of England housing association. Called '**Reach Out and Help**', the project aims to provide free and confidential advice and support to those households finding it difficult to make ends meet. CAB advisers will be on hand to help tackle a wide range of issues - from debt, housing and benefit problems to employment, health and relationship issues, plus everything in between. They will be able to visit people in their own homes or it is possible to book an appointment with an advisor at the CAB 'outreach surgery' held every first and third Tuesday of the month in Studley Village Hall. **For more information** about the project and how to access its services, please ring 01789 297492 or email districtroah@stratforduponavoncab.org.uk



Studley Allotment Association

Station Road & Dunstall allotments have a small number of plots available for the coming growing season both Starter and whole plots.

If you are interested in growing your own food; fresh air and exercise and would like more information with view to taking on a plot for the long term

Please contact:

Station Road Allotment

D. Perkins- Plot Secretary 01527 852059

A. Smith-Association Secretary 01527 854717

Dunstall Allotment

E. Holder- Plot Secretary 07539630001

Studley Parish Council 01527 853204

Email: clerk@studleyparishcouncil.org.uk

Studley Parish Council Village Awards



Judging will take place in July for the Best Kept Gardens. There are additional awards for Allotments and Best Commercial and Retail. This competition is open to all residents in Studley. Your garden, allotment, retail or commercial

outlet could win an award.

Studley Parish Council Chairman's Awards – 2015

Studley Parish Council are inviting residents of Studley to nominate individual, community groups and Youths for the Chairman's Award.

Awards Categories

- **Youth Shield Award**- For a young person who have shown sporting, artistic, cultural or any other achievements.
- **Millennium Shield Award**- For an organisation who have made a lasting contribution to the wellbeing of the Parish.
- **Silver Jubilee Award**- For an individual who has demonstrated excellence in public service to the community of Studley.
- The Awards will be presented on 26th Sept. 2015 at the Studley Parish Council Chairman's Award Evening.
- **Nomination forms can be downloaded at www.studleyparishcouncil.org.uk or forms are available at Studley Parish Council office.-**
Tel: 01527 853 204.

SAFER STRATFORD – Tackling Dog Fouling

One of the biggest environmental issues for residents in the district is dog fouling. Sadly, a number of dog-owners continue to let us all down. Parish Councils are now working in partnership with Stratford District Council Dog Warden Services in a bid to tackle the issue and clamp down on culprits.

THE LAW Failure to clean up after your dog is a criminal offence and could result in a £75 on-the-spot Fixed Penalty Notice. Non-payment could lead to a court fine of £1,000. There is no defence to claim ignorance of your dog's actions and only registered blind owners of guide dogs are exempt.

Dog fouling carries a **RISK TO PUBLIC HEALTH** and the environment. Dog faeces carry harmful infections, the most widely known being Toxocariasis. This potentially serious infection is usually transmitted via hands, but can also be spread through the dogs themselves, along with belongings such as pushchair wheels and soles of shoes.

TOXOCARIASIS is mainly found in children between the age of 18 months and five years and can cause aches, dizziness, nausea, asthma and epileptic fits. Toxocariasis can even trigger blindness. There are about 120 recorded cases per year within the UK, very few of which are serious. Nevertheless, just one case is one case too many and is easily preventable.

There is a **SIMPLE SOLUTION**. Dog mess only contaminates the soil when left on the ground for around 2-3 weeks, as this is when the Toxocara eggs mature and become infectious. By 'scooping the poop' immediately, the threat of Toxocariasis is eliminated.

DOG FOULING STINKS! Not only is it a health hazard, but dog mess is an eyesore and a blight on our local environment. Footpaths, school playing fields, parks and other recreational areas are all compromised. By following these **SIMPLE STEPS** we can all work together to turn the tide on dog fouling...

- ◆ Where possible, set aside a designated area within your garden for your dog to use before you go out
- ◆ Carry disposable bags to pick up after your dog
- ◆ Avoid places where children play
- ◆ Worm your dog at least every six months

SCOOP IT, BAG IT, BIN IT!



Please leave only pawprints; obey the law and pick that dog poo off the floor!

If you see somebody failing to pick up after their dog and you know who they are or where they live, you can report it to the District Council so that they can take enforcement action. We need the eyes and ears of local residents to help us tackle this problem...



YOGA

STUDLEY COMMUNITY INFANT'S SCHOOL

High Street, Studley B80 7HJ

TUESDAYS 7.30 - 9.00pm

Joint Freeing Exercises
Stretches
Yoga Postures
Breathing
Relaxation
Meditation

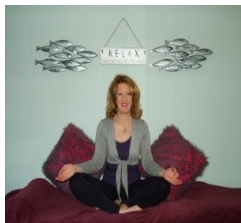
Suitable for all levels of ability

Contact:
Gillian Russel

01527 857586
gilrus3@btinternet.com
www.yogill.com



British Wheel of Yoga Teacher
 Yoga Biomedical Trust Yoga Therapy Practitioner



Yoga With Lynn Can Transform Your Life!

Yoga is for everyone, of all ages, and all levels of fitness, mobility and health. It keeps you feeling young, fit and healthy and is probably the most anti-ageing activity that you can undertake! It assists the prevention of various conditions, including heart disease, arthritis, osteoporosis, IBS, helping alleviate all

kinds of physical, mental and emotional issues.

The gentle and structured stretching postures tone and stimulate the body, inside and out, helping relieve tension, stiffness and tightness in the body, strengthening the limbs, internal systems and organs, assisting with balance and co-ordination. The breathing techniques that you learn help to release stress and tension, calm the mind, improve your memory and cleanse the body.

Yoga can be practised standing, sitting and lying down, on a yoga mat or in a chair.

You are most welcome to join in my classes at Studley Village Hall on Thursday mornings at 9.30am and 10.30am and Fridays at 9.30am. Chair Yoga and Evening Classes coming soon!

Please contact me, Lynn Ward, for further information and to book onto a class, on 07828 062805, or email: lynn@sunrosepureliving.co.uk.

Urgent Assistance Required!

By the end of March 2015 Studley could lose its
First Responders.

- We currently respond to 999 calls made to the Ambulance service locally. (nearly 2000 calls in 2014)
- All of our work is on a voluntary basis.
- We receive no organised funding or supplies of equipment and depend completely on donations.
- Due to increased call levels we do not have sufficient funds to meet our running costs!

If you would like to make a donation or offer support please contact:

Martin Barry on 0778 8583980
11a Station Road, Studley, B80 7HR



Studley Quilters

In October 2014 a group met in the Methodist Church hall to see if there would be some interest in a patchwork and quilting group running in the village. The interest has been amazing and we now have 27 members and a programme of meetings planned throughout the year. We meet on the first Thursday of the month from 7.30pm to 9.30pm and try and accommodate all skills levels with talks and demonstrations. Membership costs £10 and, for members the meeting fee is £2. Guests and non-members are welcome and are charged £4 a visit.

Anyone wanting to join the group or find out more about what we do please email helena.fletcher@mypostoffice.co.uk

Do you need a Helping Hand?

If you are looking for an **alternative to residential care** or extra support for those everyday tasks that are becoming difficult for you or a loved one – then we're here to help - **from 30 minutes per week to full time Live-in Care.**

Our **Alcester care team** has been providing award winning quality homecare since 1989 and can help with: personal care, housekeeping, help getting around or even to provide a break to an existing family member or care-giver.



To find out how we can help you,
call: 01789 444 307 or
visit: www.helpinghands.co.uk

Recruiting
Carers
Now



Studley Walking Group

The Walking Group is headed by Jim Bacon. The Group meet every Wednesday at 2 pm by Pool Road Car Park. The group usually covers footpaths in and surrounding Studley taking in the lovely countryside of Warwickshire.

Save the day in your diary or calendar if you fancy some light exercise, fresh air and meeting new people.

There will be a Family Guided Heritage Walk on the 4th July, 10 am. Please meet at Pool Road Car Park by the Millennium Gate.



Open every Monday & Tuesday
from 10 am -12pm.

Meet your friends and new friends
whilst enjoying freshly brewed
coffee or tea and delicious home-
made cakes.

Bookings can be made for
private parties.

Contact:
Studley Village Hall on
01527 853204

Planning Applications Email Alert

You can now register with
Stratford District Council if
you would like to receive
planning applications for
your area or an area you are
interested in within the
Stratford District.

All new planning applications
will be sent in a single email
each morning. If there are
no planning applications you
will not receive any email.
To register for free go to;

www.stratford.gov/planalert

Entaco Bowls Club



- Are you looking for a new sport/hobby?
- Do you want to meet new people?
- Need to take regular, gentle exercise?

We could be just what you are looking for!

Come and join us at your local outdoor bowls club here in Studley. We are on the Studley Sports & Social club ground, off Eldorado Close where we have been since 1949

We play several times a week April to September with many members bowling indoors from October to April.

Beginners are most welcome, as are players of all ages and abilities, and you can try us out for a few weeks before needing to join.

For more information ring me on 01527 523557 or visit our website at www.entacobowlsclub.com

Go on, you know you want to!
Heather Cheatham (Secretary)



National Plant Monitoring Scheme

Monitoring our wild flowers

Photo: Shutterstock

What is it?

The National Plant Monitoring Scheme (NPMS) is organised and funded by BSBI, CEH, JNCC and Plantlife. The aim is to collect data to provide an annual indication of changes in plant abundance and diversity.



National Trust, CEH

Why is it needed?

Thanks to volunteers, we have a very good understanding of changes in the populations of birds, butterflies and bats. Plants are the foundations of ecosystems, but currently we do not have a good measure of changes in plant populations.



National Trust, CEH

How will it work?

This is a scientific survey, so you will be randomly allocated a convenient 1km square to visit. The visit involves recording plant 'indicator species' in plots. Within your 1km square you will record around 5 plots.



National Trust, CEH

Who can take part?

Anyone interested in nature who can identify plants, or who is keen to learn. Different levels of participation ensure that all who are keen can participate: you do not have to be an experienced botanist. There will be training materials provided and the opportunity to attend workshops throughout the year.



National Trust, CEH

For more information visit: www.npms.org.uk





National Plant Monitoring Scheme

EVERY FLOWER COUNTS – VOLUNTEERS NEEDED FOR ANNUAL STOCK TAKE OF UK'S WILDFLOWERS

Making plants a priority

The new National Plant Monitoring Scheme (NPMS), launching in spring 2015, will for the first time enable scientists to take an annual stock take of the UK's wild plants and their habitats, but to do this we need the public's help. We are looking for volunteers to carry out surveys of wildflowers and their habitats that will provide robust evidence of which widespread plants are increasing or declining, as well as indicating the changing state of our most valued habitats such as grassland, fenland and even road verges. Plants are nature's building blocks and this new monitoring scheme will sit alongside existing schemes for the UK's birds and butterflies to help us understand more about how the countryside is changing.

Chris Cheffings, from the Joint Nature Conservation Committee says "Currently, information on plant species' abundance and change is very limited, and it is difficult to gauge the condition of habitats outside protected sites. JNCC is delighted to be able to support the NPMS, which will fill this significant gap in UK biodiversity surveillance. The annual results collected by volunteers will help to identify trends in hundreds of species, allowing us to assess plant community changes."

The search is now on to find 2000 volunteers to take part in the NPMS who will play a vital role in gathering information. Together the volunteers will monitor wild plants in 28 important habitats, ranging from hedgerows and meadows to salt marsh and scree slopes.

Hayley New, from Plantlife says "The NPMS is hugely enjoyable and over 400 volunteers have helped us set up the new scheme. It's easy to do and everyone will receive free training and guidance plus support from the partnership for volunteers who have queries, as well as web support and illustrated guidance notes – so volunteers will have the perfect survey tool kit to get them started!"

Dr Kevin Walker, Head of Science, Botanical Society of Britain and Ireland (BSBI) says:

“It’s really great to finally have a national scheme that everyone can take part in. Whether you simply love wildflowers or are a budding botanist, input from volunteers will provide sound evidence on how our wild plants and habitats are changing. It’s a fantastic achievement and should mean that wild plants are at the forefront of discussions on how our environment is changing and what we should be doing about it.”

How does the NPMS work?

- ☐ Volunteers will be able to choose from three options depending on their level of expertise: recording from a short or an extended list of target species in each habitat or recording all species they find in their plots.
- ☐ Volunteers will be given a 1 km square with a grid showing up to 25 locations. Surveyors will be asked to visit three of those locations and carry out surveys in square plots and then identify two linear features such as hedgerows, rivers and road verges and survey these locations too.
- ☐ The squares have been randomly chosen, but with a focus on squares containing habitats of interest.

Oliver Pescott, from the Centre for Ecology & Hydrology says “The results from this new scheme should allow us to quantify the smaller changes that are occurring within our most valuable habitats. In the past, volunteer-collected data have been able to demonstrate the results of large-scale habitat loss over the last century, now we would like to reveal even more detail about the changes within the remaining areas of these habitats in our landscape.”

For more information on the NPMS and how to take part please visit www.npms.org.uk

For enquiries and interviews please contact Hayley New on hayley.new@plantlife.org.uk or call **07741 314155**. We also have stunning images available.

The NPMS is a partnership of the **Botanical Society of Britain and Ireland (BSBI)**, the **Biological Records Centre (within the Centre for Ecology & Hydrology)**, **Joint Nature Conservation Committee (JNCC)** and **Plantlife**. The NPMS builds upon previous research projects funded by **JNCC** and **Defra**.



The Joint Nature Conservation Committee (JNCC) is the statutory adviser to the UK Government and devolved administrations on UK and international nature conservation. Its work contributes to maintaining and enriching biological diversity, conserving geological features and sustaining natural system



The Botanical Society of Britain and Ireland (BSBI) has been promoting the study, understanding and enjoyment of British and Irish wild plants since 1836. BSBI supports and encourages research and conservation, and is one of the world's largest contributors of biological records, collected by our volunteer members - amateur and professional botanists who benefit from our research, training and outreach programmes



The Centre for Ecology & Hydrology (CEH) is a world-class research organisation focussing on land and

freshwater ecosystems and their interaction with the atmosphere. We are a Natural Environment Research Council (NERC) Research Centre and integral to the delivery of the NERC Strategy, The Business of the Environment, with over 425 researchers and students based at sites in England, Scotland and Wales.

W: www.ceh.ac.uk E: enquiries@ceh.ac.uk T: 01491 838800



Plantlife is the charity speaking up for the nation's wild plants. We work hard to protect wild plants on the ground and to build

understanding of the vital role they play in everyone's lives. Plantlife carries out practical conservation work across the UK, manages nature reserves, influences policy and legislation, runs events and activities that connect people with their local wild plants and works with others to promote the conservation of wild plants for the benefit of all.

01527 857718

YOUR LOCAL ELECTRICIANS

For all your electrical installation work at home or at work, call your local electrical contractor first.

As an NICEIC Approved company
you are assured of a quality service
at a competitive price.

Whether it is an additional socket or an outside light or a complete rewire call G S Adams first.

We can also carry our inspection and testing of your installation to ensure it is safe for you and your family.

If you want new lighting for your home, why not call in to our handy showroom in Station Road? Our friendly experienced staff will be pleased to help.

Try The Light House for all your lighting needs.

G S Adams Ltd
Station House
98 Station Road
Studley
B80 7JS
Freephone 0808 202 1066

- G S Adams Ltd. are your local electricians, based in Station Road, Studley.
- Established for over 25 years
 - MCS Approved Solar Panel installer
 - All types of electrical work
 - Installation, maintenance or repair
 - Electrical Inspection & Testing
 - NICEIC and Part P approved
 - Portable Appliance testing
 - Local, reliable, professional
 - Electric Vehicle Charging Points
 - Fire Alarms,
 - CCTV
 - Automatic Gates
 - Intruder Alarms





STUDLEY TENNIS CLUB

The club has two floodlit hard courts and three grass courts. There are both men's and ladies teams playing in all divisions and two evening club mix sessions.

In addition to this the club continues to grow by offering tennis coaching sessions for juniors and Adults. For adults,

Coolsportz the tennis coaching provider at the club run a Beginner group and Cardio tennis. Cardio Tennis is a fitness based session, but this should not worry you, as ultimately it is fun, exciting and upbeat. It is suitable for all abilities; whether you already play tennis or not it's a great way to improve your fitness and start playing tennis. You can burn up to 600 or more calories in a 60 minute session.

Group Cardio tennis session

16 years old above

Every Wednesday: 9:15am – 10:15am

Group Tennis for beginners

Every Monday: 9:30am- 10:30 am

Junior tennis sessions

Every Thursday

4- 17 & 11- 15 years' olds -3:30pm- 4:30pm & 4-8 years' olds- 4:30pm- 5:15pm

9-11 years' old – 5:15- 6:15pm & 12 – 17 years' old- 6:15pm – 7:15pm

Tennis rackets are available but you are welcome to bring your own, just come appropriately dressed to have a go. Your first group session is always free so to sign up for any sessions or for further information please contact Neil Supperstone on 07912 66 44 26/ email neil@coolsportz.co.uk. or visit: www.coolsportz.co.uk.

If you just want to play tennis, come down to the Club every Tuesday evening regardless of the weather. For more details contact club secretary; Gloria.piper@hotmail.com

THE HUB from

Bromford
Support 



Free web wise training in May to include the basics use of email, skype every Tuesday morning from 10 am other courses include Numeracy, English and living skills. Music appreciation session every Tuesday afternoon from 1:30pm – 3 pm followed by coffee and chat. Look out for summer programme throughout the college holidays.

**To ensure you get a place,
Pop in to the HUB in the Studley Village Hall
or call 01527 854489/07436800949
www.bromford.co.uk**



Complete funeral directors

**Family business
established 1945**

Tel: 01527 852213

Mobile: 07860 252 797

**23 Alcester Road
STUDLEY
Warks B80 7AG**



Save a life at the Studley Blood Donor Session

NHS Blood and Transplant (NHSBT) are reminding Studley Residents to continue to 'Save a Life and Give Blood'. Whether you are an existing blood donor or thinking about giving blood for the first time, help support your local session and make an appointment to donate.

Studley Village Hall

High Street

Thursday 18th Jun & Thursday 27th Aug.

Thursday 24th Sept & Thursday 8th Oct.

Time: 1:30pm – 3:30pm

&

4:30pm – 7:30pm

Donated blood is used to save the lives of sick and injured patients every day. It helps not only in accident and emergency situations, but also patients undergoing surgery and receiving treatment for cancer and blood diseases, such as leukaemia



Core Stability and Why it is So Important

Our Core is our foundation for all movement, stabilizing the spine, ribcage and pelvis against stresses put upon them by movement. A strong core enables an increased mobility in both the upper and lower body, and drives power efficiently to our limbs.

Modern lifestyles are often sedentary, we may use online shopping as an option rather than to go to the local supermarket and walk around pushing a trolley. We no longer get up to change tv channels, instead we use a remote control. Many jobs offer a work from home option, ruling out any walking to and from the car or bus, and then perhaps tackling stairs inside a building. The list of today's less mobile lifestyle changes is endless.

This type of lifestyle can lead to the core muscles becoming inactive and opening ourselves to a much higher risk of injury during everyday activities such as bending and lifting and even sitting in a chair and then standing up again. Working over a computer screen is notorious for hunching of shoulders and compressing the lower back. When our core muscles are weak or not engaged during movement other muscle sets come into play which can then lead to muscle imbalances and lower back, shoulder, and neck pain.

Learning how to move with the spine both supported and in its correct alignment can work wonders to relieve the aches and pains associated with the stresses of everyday life. A strong core supporting the lower back (abdominal core) and the upper spine (shoulder girdle core) will not only help to relieve these symptoms but enable an increased mobility and power be-

YOGA STYLE FITNESS

WITH PILATES PRINCIPLES

"Holistic Dynamics"

TIGHTEN TONE TRIM
CORE & POSTURE



STUDLEY CASTLE (Latham School of Dance)

Monday 7.30pm – 8.30pm

10% discount on

Friday 9.30am – 10.30am

1st class / Block X6

Contact : Rebecca 07710 318041 www.dynamalisticwellbeing.co.uk



@DynWellbeing

BOOK NOW! £5 per class

Diaries of Events for Studley Christmas Lights Committee



Studley Sports & Social Club
8th May
7:30pm



Needlemakers Public House
25th July
2:00 pm



Studley Royal Oak Public House
1st August
Time to be advised



Wheelbarrow Race
29th August
Starting from Bell Public House
12 noon



Studley Sports & Social Club
18th September
7:30 pm



For details contact: Val Blundell

Tel no: 01527 451 683
(after 6pm)



**Call Us For Free !
And get your Free no obligation Quotation.**

Tel: 01905 828479

Vale Fire & Security is an independent installer of fire & security products. We provide Installation, Maintenance, Fault Finding and Repair Services all over the Midlands, to all types of systems. We have over twenty years experience in the industry and are dedicated to ensuring that you get the very best fire and security protection available.



We are always at the forefront of the introduction of new technology to ensure our customers get the most up to date systems available. We only use the best equipment available within the market, using only reputable Manufacturers. Every installation is surveyed by one of our Sales Team and installed by our own fully trained Engineers to current industry standards.

Whether it is a modern high specification office, factory, shop, school or house, every system gets the same attention to detail to ensure you get the level of protection necessary and a system designed to suite your individual needs that will meet current industry standards.



- We offer free advice, free quotations and Security risk assessments
- We Provide maintenance contracts from as little as £1 a week.
- We have professional engineers on call 24 hours a day 365 days a year
- All our staff are fully vetted to British Standard 7858:2006 + A2:2009 and fully trained to ensure your peace of mind.
- Cost effective monitoring of alarms by an independent monitoring station.
- We care about the quality of our work and our customer's expectations and ensure that our systems meet all the current Standards.

Our services are not just restricted to new installations. Most existing systems can be put onto a maintenance contract giving you access to our 24 hour 365 days a year engineers and ensuring the system is in tip top condition.



For All Your Fire & Security Requirements !

Call us now to arrange a free site survey and quotation !

**See our
WEBSITE for
special
offers !**

Tel: 0800 8600842

Email: sales@valefireandsecurity.co.uk

Website: www.valefireandsecurity.co.uk



Fire & Security Ltd. Unit 1 Brookend Farm, Brookend Lane, Kempsey, Worcester, WR5 3LF.

Fire Protection, Security Alarms, CCTV, Access Control Systems,
Bespoke System Design & Integration, Gate / Barrier Automation.



STUDLEY ASSOCIATION OF NEIGHBOURHOOD WATCH SCHEMES (SANS)

Studley Neighbourhood Watch

Tel: 01527 857831

Email: jimbacon@blueyonder.co.uk

www.facebook.com/studleynhw

"Crime cannot flourish in a community that cares"

NEWSLETTER

Spring 2015

COMMUNICATING WITH THE POLICE

In an emergency dial **999**

To report a crime or serious incident telephone **101**

CONTACTING ALCESTER NORTH SNT

PC 1742 Ed Doxey (Beat Manager) -

edward.doxey@warwickshire.pnn.police.uk

PCSO 6111 Gary Johnson – gary.johnson@warwickshire.pnn.police.uk

PCSO 6273 Aadila Hussain – aadila.hussain@warwickshire.pnn.police.uk

PCSO6218 Andy Steventon – Andy.steventon@warwickshire.pnn.police.uk

Alcester North Mobiles --- 07789 653018 & 07919 164826

Call **Crimestoppers** anonymously with information about crime on **0800 555 111**

(Crimestoppers is a Charity who will pass on information to the police without revealing any details of the caller. You may also receive

HOW AWARE ARE YOU?

Do you know what crime is happening around you, are you aware of what types of crime are happening in neighbouring towns and villages and do you know what you can do to prevent crime happening to you?

Studley NHW attempts to keep you informed by encouraging the Police to issue a **weekly update** (see below) and **monthly SNT Newsletter**, by keeping in touch with other NHW groups in the county and reporting on incidents raised by local residents. With the excellent support of the local PCSOs we can let you know about burglaries within hours of them being reported and how entry into the property was gained.

We keep you informed of the latest scams and "urban myths"; these are false email scams encouraging people to alert their friends, the internet equivalent of chain letters

Police Crime Prevention Officers will advise on security of your property. Crime prevention products, such as **SMARTWATER** are available at discounted prices.

This information is issued by Email , it is a blind copy, no one in the group sees your E mail address, if you wish to be kept aware please forward your E mail address to jimbacon@blueyonder.co.uk

We are on **Facebook**; messages about local crime are also posted on www.facebook.com/studleynhw

Available from NHW Association

The Association supports the individual Street schemes with the following **Start up Support** these have been designed to assisting the start-up of a NHW scheme and supply of leaflets and information you need if you would like to organise a NHW group in your street.

Fact Sheets are available from the National NHW and cover such topics as *Home security, Bogus Callers, Personal Safety, Good Neighbour Fact Sheet, Happy Holidays* and *Vehicle Crime*

Quick Alert Messages are generated by residents reporting suspicious events to the Association and sent out by E mail; if you wish to receive such information please forward your E mail address to the Association.

CAPS/ Police messages are sent out about burglaries and are forwarded to individual houses by the street coordinator.

Door Stickers are available to show you are a member of a NHW scheme, that you have coded your property or that you do not buy anything at the door. All are deterrents to the burglar.

Property Coding Kits are available on loan to post code your property each kit contains an electric engraving tool, permanent marker pens, UV marker pens, UV torch and special labels.

Residents Recommended Tradespersons Register. The Association has compiled a register of Resident recommended tradespersons



**THE ANNUAL GENERAL MEETING
OF STUDLEY NEIGHBOURHOOD WATCH
ASSOCIATION**

WILL BE HELD ON THE 8th JULY

**AT 7:30 PM IN THE VILLAGE HALL
ALL RESIDENTS ARE WELCOME
Please support your Association**

The Effectiveness of Burglary Security Devices

Extract From National N.N.W

www.ourwatch.org.uk

Domestic Burglary is a high volume crime affecting many households. While it has declined in recent years, it causes substantial financial loss and damage to property as well as high levels of anxiety. Surveys of public priorities about crime put burglary at the top. To date there has been little systematic research into the role of security devices in declining burglary or their relative effectiveness in different contexts. The work is funded by the economic and Social Research Council for 18 months under the Secondary Data Analysis Initiative (ES/K003771/2) using data from the Crime Survey for England and Wales.

Key Findings

Consistent with previous research, security has a major role in determining burglary rates. In particular:

- ◇ Combination of security devices in general afford up to 50 times more protection than no security.
- ◇ What was most effective was a combination of four devices: external lights on a sensor; internal lights on a timer; double or deadlocks on doors and window locks.
- ◇ Protection conferred against burglary does not consistently increase with the number of security devices.
- ◇ Individual security devices confer up to three times greater protection than no security, the most effective being external lights with sensors. Counterintuitively, a burglar alarm on its own seems to increase burglary risk.

Conclusion

These findings are consistent with other work by this research team that suggests security played a major role in the long-term decline in burglary. This study strongly recommends that security standard for housing should promote the routine incorporation of good quality security devices.

NEIGHBOURHOOD WATCH

The Effectiveness of Burglary Devices



Social Rentals 3x more at risk of being burgled than house owners



W- Window Lock



I- Interior lights & Timer



D- Double or Deadlocks



E-External Lights on Sensors

Offer 49 x more protection than no security against getting burgled

Data taken from the British Crime Survey for
England & Wales from 1992- 2012

Since 1993, the risk of being burgled has
reduced x 3

What the research doesn't show	Other Factors
<ul style="list-style-type: none"> • Further protection does not increase efficiently or consistently with more security products on top of 'WIDE' 	<ul style="list-style-type: none"> • Double glazing has grown expeditiously in recent years which has helped to decrease burglary.
<ul style="list-style-type: none"> • The research does not reflect the quality of products or if they were used or intended to be i.e Alarm activated. 	<ul style="list-style-type: none"> • 5% of household still have no security. • Secured by Design has had a positive impact on designing out crime.

Arden Community Forum

The Arden Community Forum is a local informal meeting for residents to come along to which offers you a straightforward way to raise your views and concerns about things that matter to you. The Arden Community Forum meets at least 4 times a year, usually on a Thursday evening, at venues chosen by people who attend. All the meetings start with a half hour **Open Session from 6.30pm** with the Forum meeting starting at 7.00pm. During this time you can drop in to chat to officers from your Neighbourhood Policing Team, your local Councillors and Council Officers and join us for a cup of tea whilst browsing our information stands.

Forums are often "themed" around issues that have been raised by residents and we have covered a variety of topics including Crime Prevention, Public Health, Fire & Rescue Service, Ambulance Response times to name just a few.

At the meetings, the **Safer Neighbourhood Policing Team** give an update on the priorities that were agreed at the previous meeting and you are given the opportunity to vote on the new priorities for the following 3 months for your area.

There is a **“You Said, We Did!”** update that tells you what we have done about all the issues you raised last time.

There is a **Have Your Say** session where you can raise any issues of concern and you can suggest topics for discussion at future meetings.

County, District & Parish/Town Councillors and representatives from NHS Warwickshire, VASA (Voluntary Action Stratford-on-Avon), come to the meetings to keep you updated on any new developments that may be of interest or concern to you.

Community Forum Dates
(Venues to be confirmed)
11th June, 24th Sept & 10th Dec 2015

If you are interested to know more or how you can get involved, please call Lizzie Price on 07557 565782 or email elizabethprice@warwickshire.gov.uk

Studley Sports & Social Club (ENTACO)
Eldorado Close, Studley. Tel: 01527 852671
Membership: £4.50 per year to include use of club facilities.
Function room for hire.
For further details contact:
Email: studleyclub@hotmail.com or
www.facebook.com/studleyclub



Studley Flower Festival

The flower show will be held at Studley Sports & Social Club on 29th August 2015. Start time: 1:30pm. There will be various categories of entry for produces, baking & flower arrangement. For further details contact: Des Crowe on: 01527 759036. Proceed from the Flower festival will donated to local charities chosen by the organising committee.



One to one local cricket coaching from fully qualified and accredited ECB Coach. First Aid and Safe Guard Trained.

£20 per 1 hour session

Contact Adam

Telephone: 07469 937509

Useful Telephone Numbers

Stratford District Council	01789 267575
Warwickshire County Council	01926 410 410
Potholes	01926 412 515
Block Sewers	01789 260 858
Damaged Pavement	01926 412 515
Refuse & Recycling	01789 260 616
Street Lights	01926 736 547
Graffiti & Fly Posting	01789 260 616
Abandoned vehicles	01789 260 616
Dangerous Buildings & Walls	01789 260 626
Overgrown Hedges / Grass	01926 412 515
Dog Fouling	01789 260858
Overflowing Skips & Bins	01926 412 515
Fly Tipping	01789 260 616
Planning	01789 260 303
Elections	01789 260208
Gas Leaks	0800 111 999
Flooding	0815 988 11 88
Parking	01789 260 691
Rubbish on Private Land	01789 260858



STUDLEY FESTIVAL AND FUN DAY

This year the Festival will be held on Saturday 4th July on the Studley Sports and Social Club Sports field in Eldorado Close beginning at 12 noon and continuing through to the evening. There will be many more stalls, stands and exhibitions than previous plus the Pig Roast, Bouncy Castle and Fun Fair. Bookings are now being taken for anyone who would like to have a stall. The Club Bar will be open all day live music in the function room in the evening.

Eric Holder

Tel No: 01527 460120

Mobile: 07539630001

Email: eric.holder@sky.com

BOOK EARLY TO AVOID DISAPPOINTMENT!



**Studley Sports & Social Club
Eldorado Close,
Studley
Tel No: 01527 852671
www.ssscentaco.co.uk**

Studley Community Library



Studley Community Library is thriving. Warwickshire Library Services has started a project of giving every school going child a library ticket. As a result of this project Studley Community Library had an open day for the children from the local schools to visit the library.

We particularly pleased that new shelving has been installed in the children's section for non-fiction books. This made it easier for both children and parents.

A recent report from the Warwickshire Library Services has sighted Studley Community Library as a good example of a well run Library. Studley Community Library have been contacted by other areas that would like to set up their own Community Libraries.

A recent Authors evening by Sara Coward, who plays the character of Caroline in the Archers, was well attended. Her intended visit was to talk about her book 'Dialogues with my Dogs' but ended up talking about the Archers which seem to interest people more than the book.

Studley Community Library will be discussing with Studley Village Hall Management Committee for a once a week opening in the evening during the months of May, June & July.

Studley Community Library is run by a group of dedicated volunteers who enjoys the running of library but we still require more volunteers to help the delivery of the service. If you think you have a few hours to spare and would like to be a volunteer please come and join our team. We welcome work experience.

It is only possible to have this wonderful facility due to the generosity of the volunteers, Studley Parish Council, Studley Village Hall

and Warwickshire Library Services. Please make use of your Community Library

Opening hours of the Library

Tuesday & Thursday, 10 am – 4pm
Friday & Saturday, 9:30 am- 12:30pm
Closed: Monday & Wednesday
Tel No: 01527 853 753

Ken Hall

Studley Community Library Volunteer

Gold Award & Small Town Award

Once again Studley has won the Heart of England in Bloom Gold Award and is also the winner of the Small Town Award for 2014. This would not have been possible without Studley in Bloom who have work hard all year round planting the flowers in the Village.

If you would like to advertise in Studley Voice (Autumn/
Winter Issue) please contact;

Studley Parish Council

Studley Village Hall

High Street

Warwickshire

B80 7HJ

Tel no: 01527 853 204

Email: clerk@studleyparishcouncil.org.uk